



CESSNA SKYLANE





A PERFECT TRANSITION

There is a moment when you go from simply having your pilot's certificate to being a pilot. It's a transition you feel in your gut, and once you've made a 230-horsepower climb in a Cessna® Skylane® there's no going back. A forgiving high-wing design and durable airframe provide impressive performance, powerful capability, and low operating and acquisition costs. The proven Cessna Skylane is carefully designed to make it easy to go fly and enjoy the journey.



COMFORT FOR CAPABILITY

Settle into the left seat of a Cessna Skylane, and you'll find deep-contoured leather seats, ergonomically designed to deliver optimal comfort, even on the longest flights. Cabin air controls with enhanced ventilation sustain consistent cockpit temperature, while advanced soundproofing creates a quiet and comfortable environment.

Wraparound windows and a high-wing design allow both passengers and pilot to enjoy panoramic views of the landscape, no matter which seat they choose. The Cessna Skylane also keeps every passenger comfortably charged with a standard 12-volt power outlet for laptops and mobile devices for unlimited work or play during longer flights.



Easily accessible cargo area

SITUATION, AWARE

The all-glass Garmin™ G1000™ avionics suite integrates all primary flight, engine and sensor data, giving the pilot advanced at-a-glance situational awareness and intuitive navigation. Real-time, flight-critical data is gathered and displayed on two configurable large-format screens, enabling the pilot to control all aspects of flight with minimal effort.

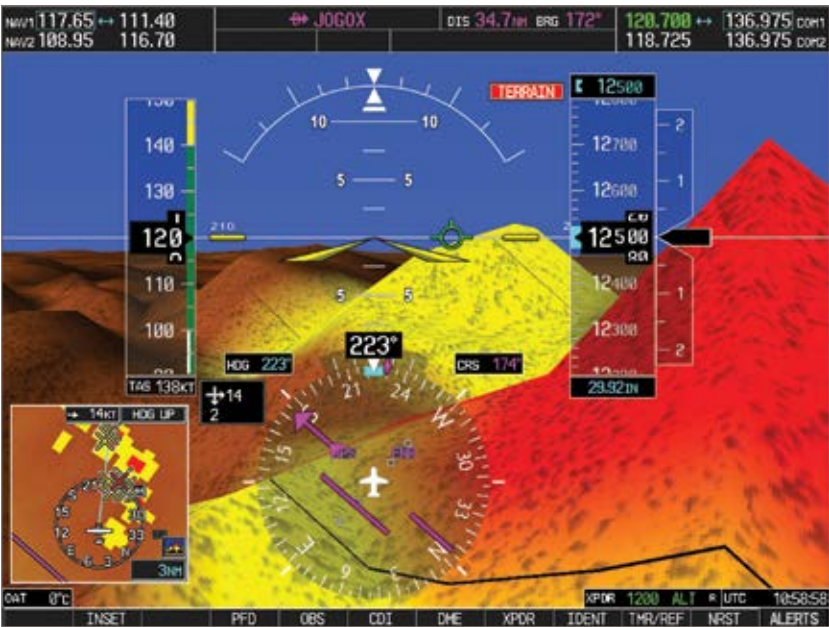
The GFC™ 700 autopilot system provides in-flight support features previously available only on larger commercial aircraft, such as a go-around button and flight-level change. Once programmed and engaged, the GFC 700 can perform virtually all of the necessary pilot actions between climb-out and final descent. Its precise vertical and horizontal guidance puts you right on the nose of your approach every time, even scheduling airspeeds for climbs and descents.



ENHANCED VISION SYSTEM

An optional Enhanced Vision System (EVS) provides an infrared view outside the cockpit that turns night into day and improves vision through fog and haze. An ideal complement to the Garmin G1000 avionics Synthetic Vision Technology (SVT™), EVS provides a real-time moving image of the outside environment, illuminating possible hazards not represented in the synthetic vision symbology database.

The EVS feed may be displayed in large format on the Garmin G1000 avionics MFD for easy reference on approach or reduced in size and shown alongside the airport map to aid in ground maneuvers. EVS greatly enhances situational awareness in flight and on the ground with virtually no added weight, increasing even further the utility of your Cessna Skylane and peace of mind for pilot and passengers.



GARMIN G1000 AVIONICS FEATURES*

- Topographical display for intuitive terrain awareness
- Rectangular pathways for easy highway-in-the-sky navigation
- Clear depiction of towers and obstacles, even in low visibility
- Three-dimensional display of traffic to quickly locate other aircraft

*Simulated flight information

Electric Red Pearl

Medium Concorde Blue Metallic

Slate Gray Pearl

Cumulus Pearl

Chrome Yellow

EXTERIOR DESIGN SELECTION



Primary Color

Accent Colors



Primary Color

Accent Colors



Primary Color

Accent Colors



PROVEN PERFORMANCE

Pack more than 1,100 pounds of payload and cruise at up to 145 knots. With the ability to use short, unimproved runways, including dirt and gravel, the Cessna Skylane is a true high-performance aircraft with more than 900 nautical miles of range. Experience the class-leading capability and safety, all backed by a proven track record.

SPECIFICATIONS

PERFORMANCE*		
Takeoff Ground Roll (MTOW)	795 ft	(242 m)
Maximum Climb Rate	924 fpm	(427 mpm)
Max Cruise Speed	145 ktas	(269 km/h)
Max Range	915 nm	(1,695 km)

POWERPLANT	
Manufacturer	Lycoming
Model	IO-540-AB1A5
Power Output	230 hp

WEIGHTS		
Maximum Takeoff	3,100 lb	(1,406 kg)
Empty Weight	1,968 lb	(893 kg)
Useful Load	1,132 lb	(518 kg)

INTERIOR DIMENSIONS		
Cabin Height	48.5 in	(1.23 m)
Cabin Width	42 in	(1.07 m)
Cabin Length	11 ft 2 in	(3.40 m)
Baggage Capacity	200 lb	(91 kg)

MAXIMUM OCCUPANTS	4
-------------------	---

* Performance data is based on standard conditions with zero wind. Field performance assumes a level, hard-surface, dry runway. Range is based on a ferry mission with 1 pilot (170 lb) at LRC with 45 minutes reserve.



REST EASY TECHNICAL SUPPORT AND PARTS ARE AT YOUR FINGERTIPS

Textron Aviation's extensive engineering and manufacturing resources provide you with a worldwide network of knowledgeable technical support representatives backed by more than 80 years of aviation experience.

Our Textron Aviation parts distribution network is the largest in the world, supplying you with everything from batteries and tires to parts for your specific aircraft. We understand that optimizing the operational cost of your aircraft is important and support you by offering timely and efficient delivery of the highest quality OEM-repaired or overhauled parts.

Count on us to be there for the full life of your aircraft.

service.txtav.com

THE WORLD'S LEADING AIRCRAFT MANUFACTURER

Textron Aviation brings smart innovation to the market — leveraging the latest technology in our industry-leading Beechcraft®, Cessna and Hawker® aircraft — a cornerstone of more than 80 years of performance. Together, Cessna and Beechcraft account for more than half of all general aviation aircraft flying, having delivered more than 250,000 aircraft that exceed 100 million flight hours and operate in more than 143 countries. In the past decade, Textron Aviation certified and delivered 35 new aircraft products. From Citation® jets, the world's best-selling business jets, to the class-leading King Air® and Caravan® turboprops to the Cessna Skylane, the pilot-favorite piston for more than half a century — Textron Aviation leads the industry with the broadest product portfolio and the largest aircraft service network in the world.

An aerial photograph of six Textron Aviation aircraft parked on a tarmac. The aircraft are arranged in two rows of three. The top row features three smaller, single-engine piston aircraft. The bottom row features three larger aircraft, including two turboprops and one piston aircraft. The aircraft are primarily white with various blue and red accents. The background shows a wide, flat airfield under a clear sky.

INNOVATION PERFORMANCE LEADERSHIP



CESSNA.COM | U.S. **+1.844.44.TXTAV** | INTERNATIONAL **+1.316.517.8270**

©2015 Textron Aviation Inc. Cessna, Cessna's logo, Citation, Caravan and Skylane are registered trademarks of Textron Innovations Inc., used by permission. Beechcraft, its logo, King Air, Hawker and its logo are registered trademarks of Beechcraft Corporation. Garmin, G1000, SVT and GFC are trademarks of Garmin International, Inc. or an associated company. BROCH-PIST-182T-0715